

# FLAT FACE - BAT SERIES

## MALE



### TECHNICAL FEATURES AND OPTIONS



**Locking Mechanism**  
Locking Ball System  
+Safety Lock



**Flow Rate**  
Up to 189 l / min



**Material**  
Carbon Steel  
Stainless Steel  
Brass



**Working Temperature**  
-20 °C / +90 °C



**Interchange**  
16028



**How to Connect**  
Push



**Operating Pressure**  
Up to 315 Bar



**Available Threads**  
BSP - NPT - Metric - SAE



**Under Residual Pressure**  
Connetion: Allowed  
Disconnection: Not Allowed



**Body Sizes**  
ISO 6.3-19

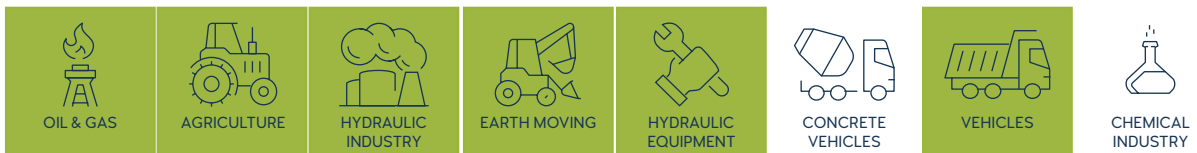


**Sealing Description**  
NBR - FKM



**Valve Type**  
Flat Face

### MAIN APPLICATIONS



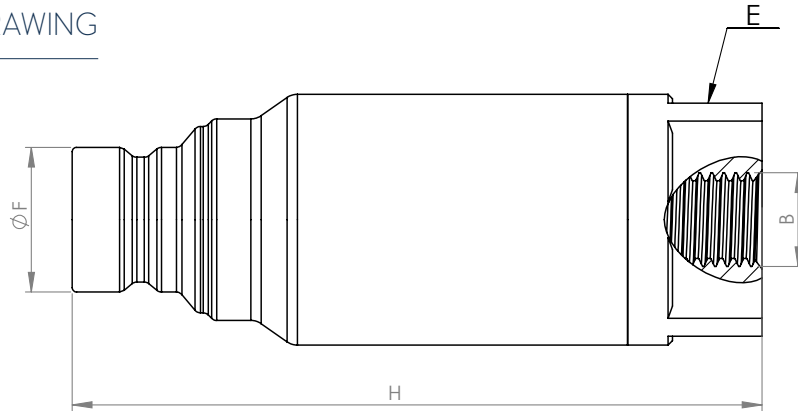
INFORMATION

- Easy connection with male side under residual pressure (female side to drain) thanks to the internal valve.
- Flat face is easy to clean, reducing the inclusion of contamination inside the hydraulic circuit.
- Minimal fluid spillage during disconnection, reducing fluid spillage to the environment.
- Minimal air inclusion during connection.
- Internal valve design creates minimal pressure drop, maintaining circuit efficiency in the system.
- The modular design allows flexibility with a wide range of configurations.
- Good resistance to pressure impulses.
- Compact slim design.
- Safe and simple to use.

WARNING

- Connection and disconnection under dynamic pressure is not allowed.
- Connection and disconnection is not allowed when the temperature of the circulating fluid is above 80°C / 176°F.
- Make sure the system pressure is below the maximum working pressure.
- Please ensure that the OLEOCON product you have chosen is compatible with the temperature , material and pressure requirements of your system.
- Please contact OLEOCON technical support for any further questions.

## TECHNICAL DRAWING



BODY SIZE	DESCRIPTION	COUPLING GENDER	Hex		THREAD SIZE(B)	DIAMETER		LENGTH		WEIGHT				
			mm	inch		mm	inch	mm	inch	kg	lbs			
06	BAT-6B-G14	MALE	E	26	1.02	1/4	F	16.15	0.64	H	77	3.03	0.25	0.55
10	BAT-10B-G38	MALE	E	30	1.18	3/8	F	19.7	0.77	H	89.6	3.53	0.35	0.77
	BAT-10B-G12	MALE	E	30	1.18	1/2	F	19.7	0.77	H	90.6	3.57	0.37	0.82
12.5	BAT-12B-G12	MALE	E	36	1.41	1/2	F	24.5	0.96	H	101	3.98	0.56	1.23
	BAT-12B-G34	MALE	E	36	1.41	3/4	F	24.5	0.96	H	103	4.05	0.58	1.28
19	BAT-19B-G34	MALE	E	41	1.61	3/4	F	29.9	1.17	H	111.5	4.39	0.79	1.74
	BAT-19B-G1	MALE	E	41	1.61	1	F	29.9	1.17	H	112.5	4.39	0.85	1.87

BODY SIZE	WORKING PRESSURE		BURST PRESSURE	
	MALE		MALE	
	MPa	PSI	MPa	PSI
6	31.5	4568	126	18270
10	25	3625	100	14500
12.5	25	3625	100	14500
19	25	3625	100	14500

BODY SIZE	RATED FLOW			FLUID LOSS PER DISCONNECT
	PRES.DROP ( kPa)	L/MIN	GPM	ml
6	100	12	2.64	0.02
10	100	23	5.06	0.035
12.5	100	45	9.91	0.07
19	100	100	22.02	0.15